

**Caution:** To ensure correct and safe use of the products, make sure that you also read the Operating Instructions carefully prior to operation.



# actiCAP CCCslim Setup



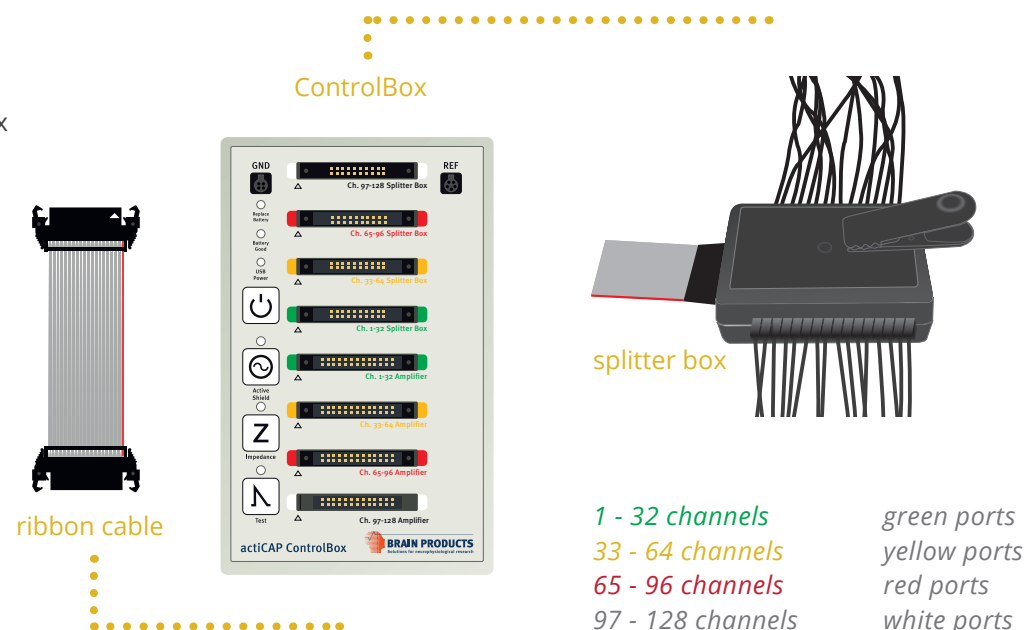
## 1 Installing the actiCAP software:



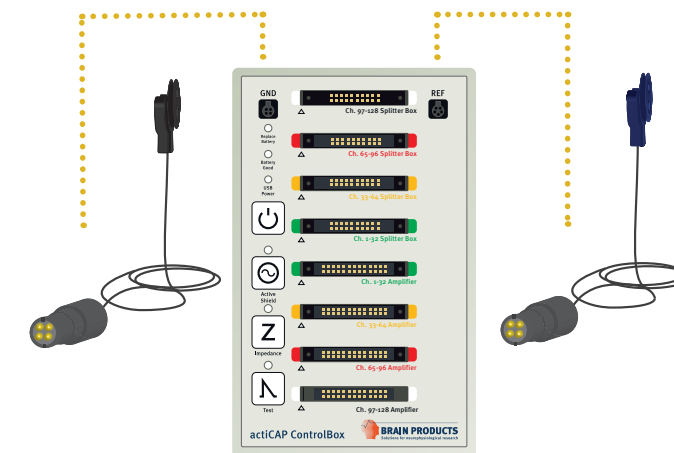
Plug in the USB stick and open the installation menu via double click on autorun.exe.

## 2 Important: Please make sure to respect the physical channel order when connecting electrode sets. Before connecting or disconnecting any electrode set (step 2 and 3) make sure that the actiCAP ControlBox is switched OFF.

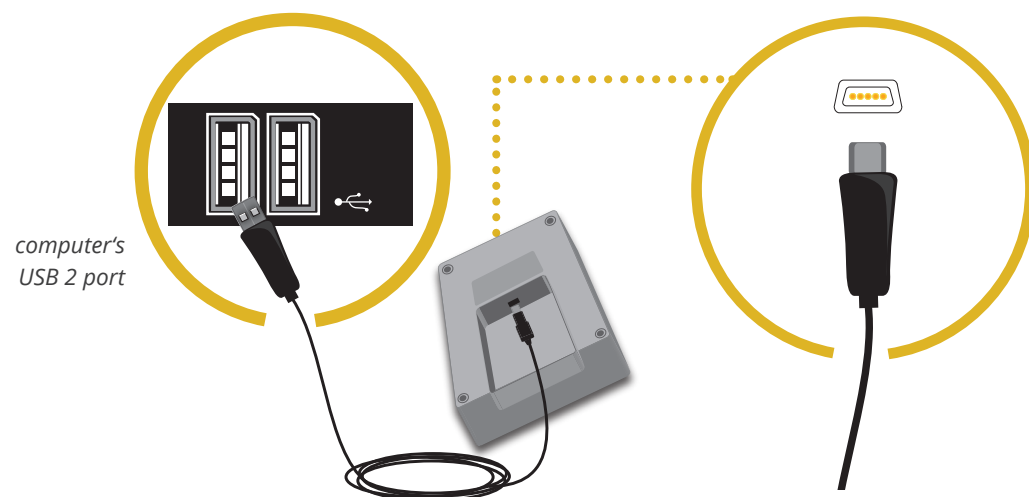
Use the flat ribbon cable to connect the actiCAP ControlBox to the amplifier. Then connect each splitter box to the correspondent connector on the ControlBox.



## 3 Connect the GND and REF electrode to the ControlBox

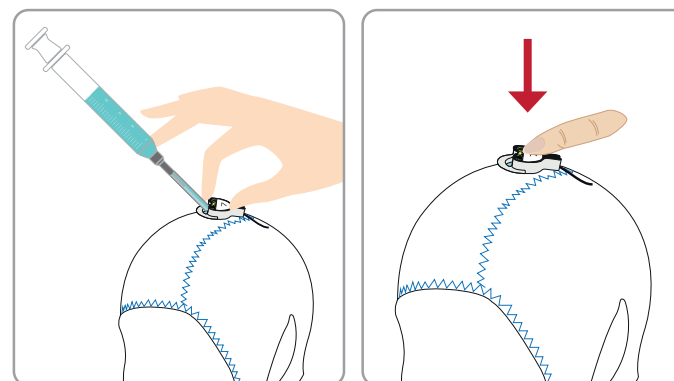


## 4 Installation of the actiCAP drivers



Remove the battery cover on the rear side of the ControlBox. Then use the actiCAP USB cable to connect the ControlBox to the computer. Windows will install the driver automatically.

## 5



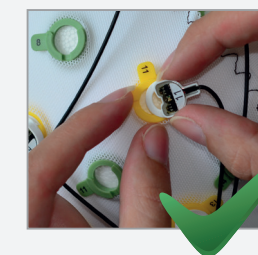
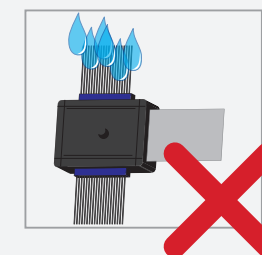
Prepare a 64 channel actiCAP slim or actiCAP snap electrode cap in approx. 10 minutes following these steps.

Start with the GND and REF electrodes.

- Slightly lift the electrode
- Inject the gel under the pellet
- Press down the electrode

## Warnings:


- The splitter box must not come into contact with water.
- Do not pull the cables when removing the electrodes from the cap. Use both hands to remove the electrodes from the holder.



# Setup Your actiCAP slim

CE UK

Version 004  
© Brain Products GmbH



Brain Products GmbH  
Zeppelinstrasse 7  
82205 Gilching  
Germany  
T +49 (0) 8105 733 84 0  
F +49 (0) 8105 733 84 505  
sales@brainproducts.com  
www.brainproducts.com

**Worldwide Caution:**  
Our products are scientific equipment for  
INVESTIGATIONAL USE ONLY! Medical use  
e.g. for diagnosis, treatment of disease or  
other such purposes is strictly forbidden.