

**Caution:** To ensure correct and safe use of the products, make sure that you also read the Operating Instructions on DVD carefully prior to operation.

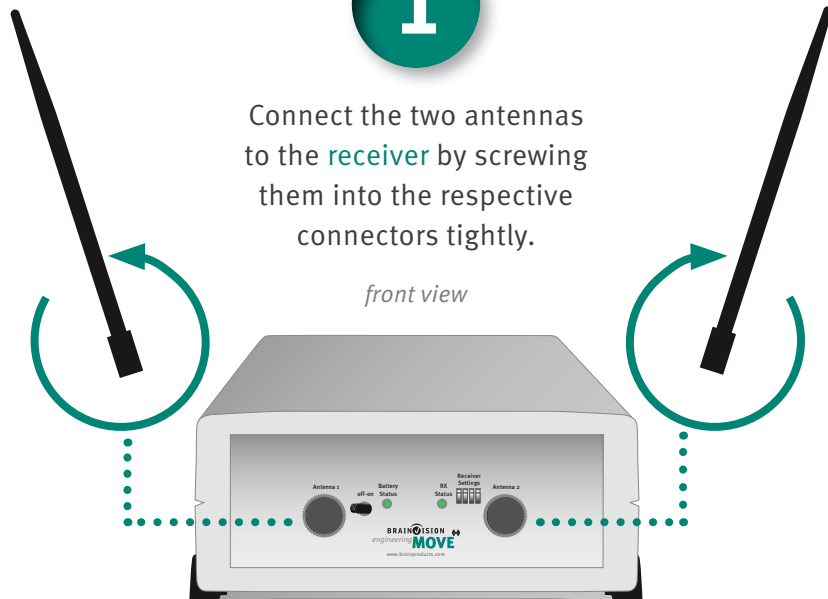


# **BRAINVISION** engineering **MOVE Set Up** ✓

**1**

Connect the two antennas to the **receiver** by screwing them into the respective connectors tightly.

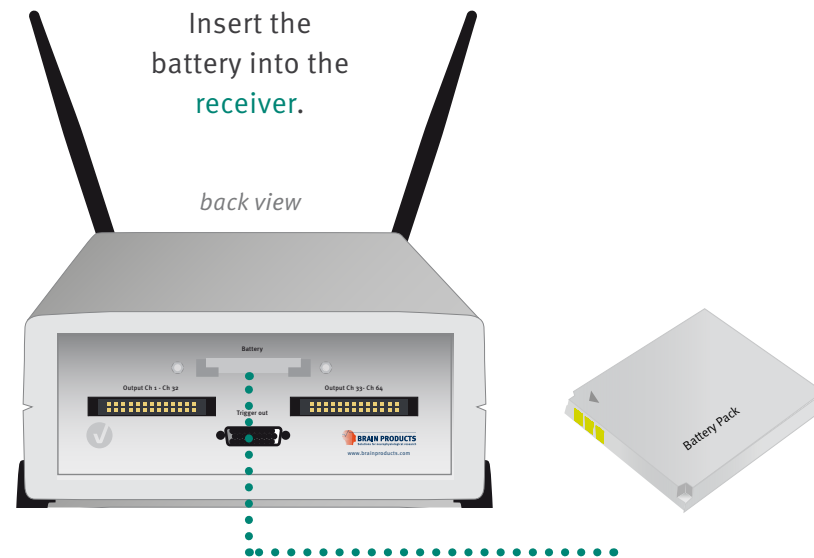
front view



**2**

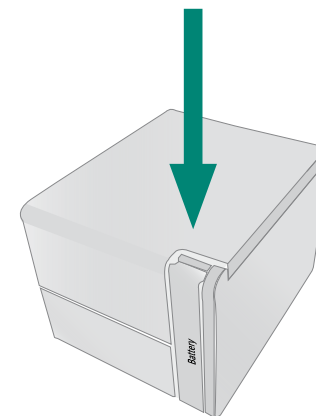
Insert the battery into the **receiver**.

back view



**3**

Push the battery compartment lid

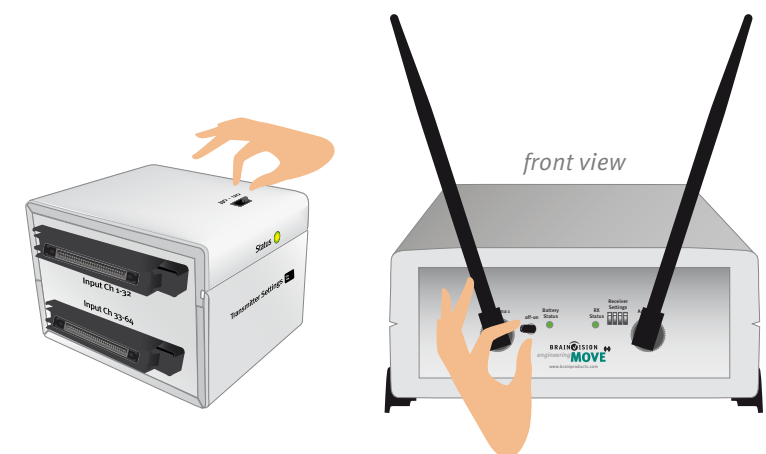


To insert or remove the battery of the **MOVE transmitter**:

1. remove the battery compartment lid by pushing it down
2. when the lid starts sliding out, drag and remove it completely
3. now you can insert or remove the battery

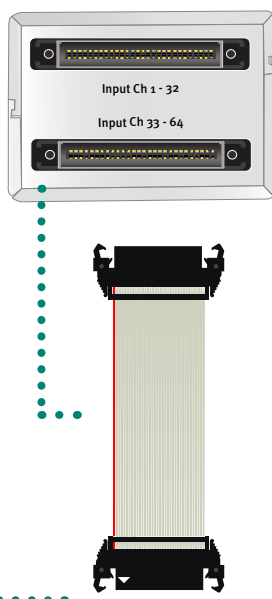
**4**

Switch the **transmitter** and the **receiver** on.



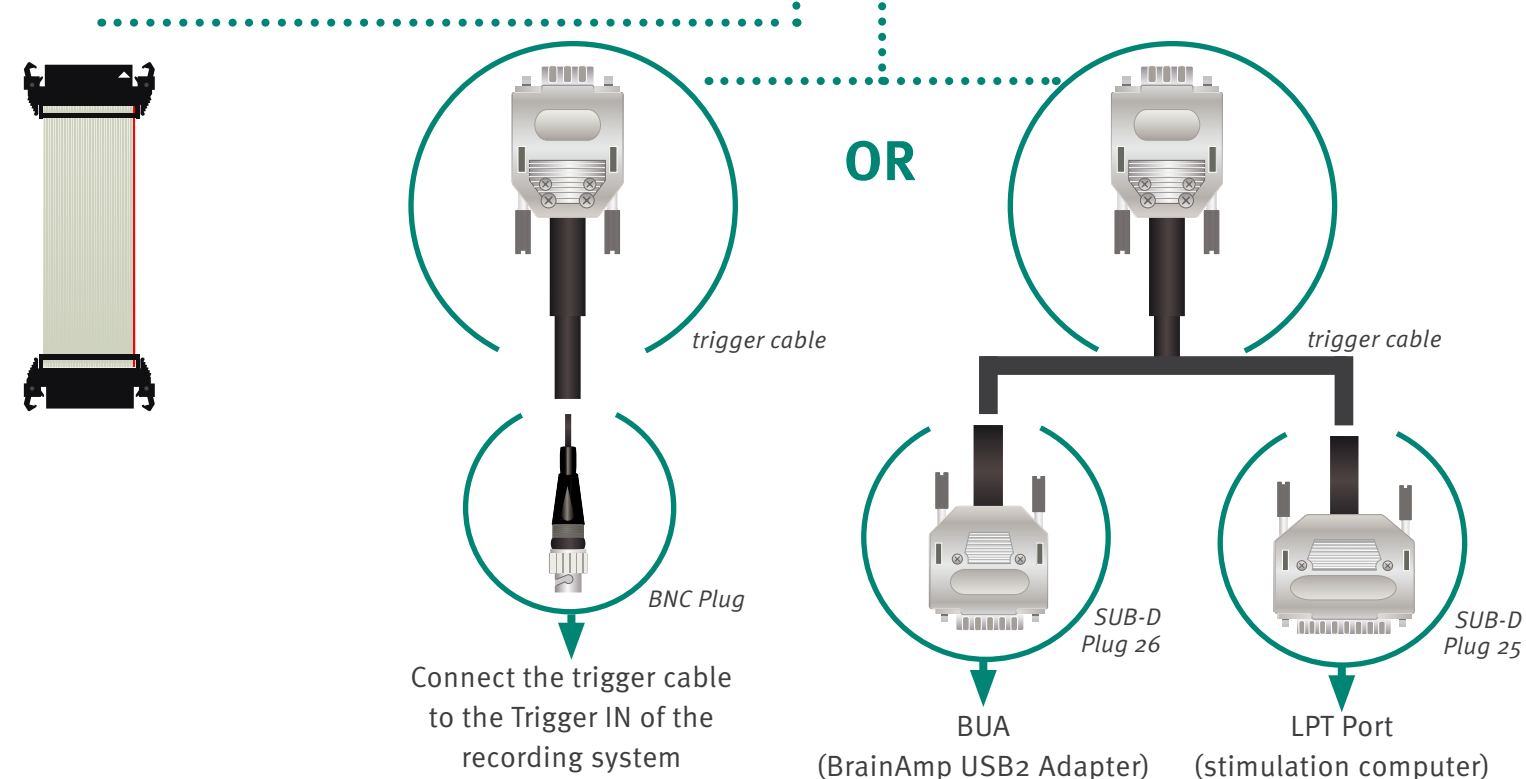
**5**

Use the flat ribbon cable to connect the electrode cap to the **transmitter**.



**6**

Use the flat ribbon cable to connect the **receiver** to the amplifier. Please note that for every other amplifier than the BrainAmp a special adapter will be needed.



**7**

If the RX status LED on the **receiver** is green, then the communication is optimal.

