

## Set Up Your SyncBox



Version 006 07/2022  
© Brain Products GmbH

**Worldwide Caution:**  
Our products are scientific equipment for INVESTIGATIONAL USE ONLY! Medical use e.g. for diagnosis, treatment of disease or other such purposes is strictly forbidden.

T +49 (0) 8105 733 84 0  
F +49 (0) 8105 733 84 505  
sales@brainproducts.com  
www.brainproducts.com

**Brain Products GmbH**  
Zeppelinstrasse 7  
82205 Gilching  
Germany



**Note:** To ensure correct and safe use of the products, make sure that you also read the Operating Instructions carefully prior to operation.



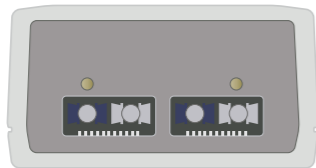
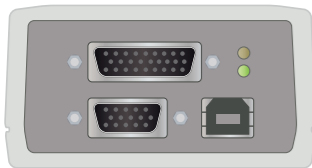
# BRAINVISION professional SYNCBOX Set Up

top view

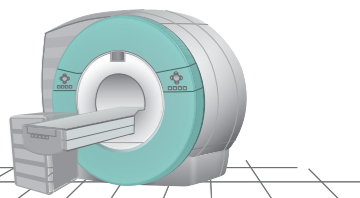
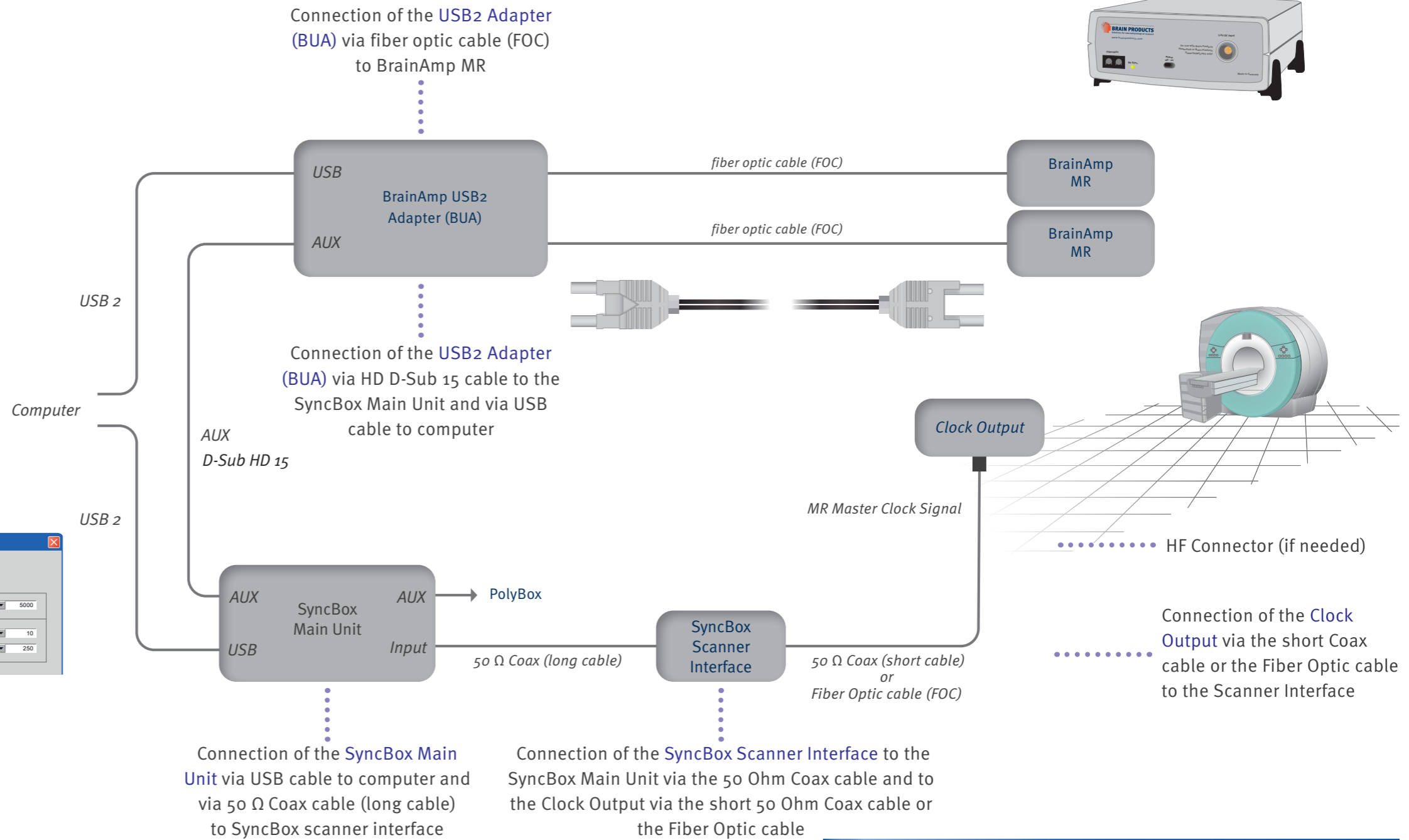
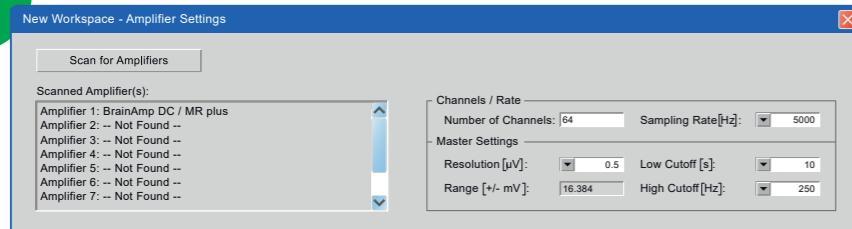


BUA side view (1)

BUA side view (2)

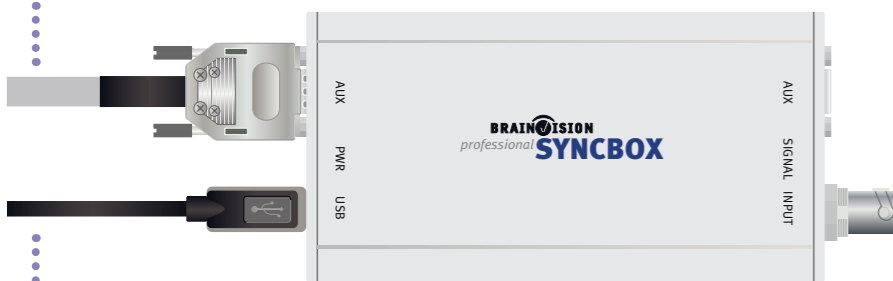


## BrainVision Recorder Settings:



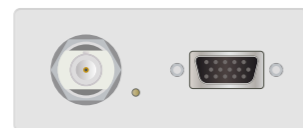
## Connection to USB2 Adapter (BUA)

top view

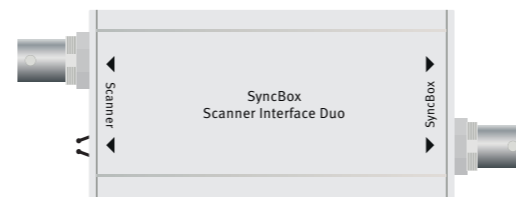


## Connection to computer

side view (1)

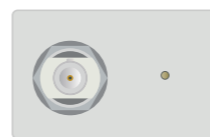
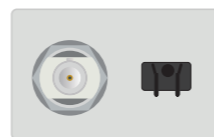


side view (2)



top view

side view (1)



side view(2)

