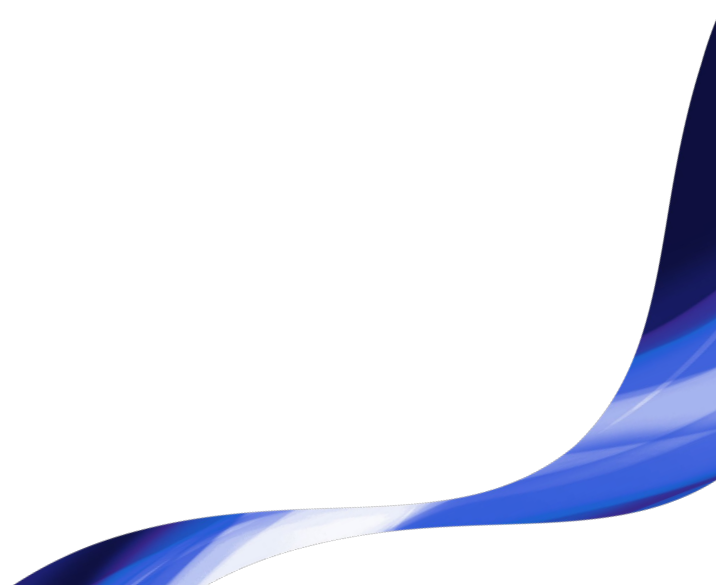




Tobii Limited Warranty

Service Description

July 14, 2020



Coverage term length:				
	Tobii Limited Warranty	Expired or voided warranty	Tobii Care	Third-party supplier
Hardware	Two years from purchase	After two years or if device is broken due to improper use	Annual renewal	N/A
Second-hand hardware	One year from purchase	After one year or if the device is broken due to improper use	Annual renewal	N/A
Mobile Testing Accessory (MTA)	One year from purchase	After one year or if the device is broken due to improper use	Annual renewal	N/A
Tobii VR Integration	One year from shipment, applies to retrofitted HMD only	After one year or if the device is broken due to improper use	N/A	HTC standard warranty applies to non-retrofitted components
Tobii Upgrade Key for Tobii 4C	All Tobii 4C eye tracker editions have a one-year warranty	After one year or if the device is broken due to improper use	N/A	N/A
Third-party hardware (e.g. computer)	Not covered	N/A	N/A	Check supplier's warranty terms
Subscription Rentals	N/A	N/A	Applies throughout the subscription period	N/A
Coverage options:				
Repair costs	Included	Repair fee	Included	Check supplier's warranty terms
Shipping costs	Included	Included in the repair costs.	Included	Check supplier's warranty terms
Repair time	15 days from date received at Tobii	15 days from date received at Tobii	Prioritized once received at Tobii	Check supplier's warranty terms
Theft	Not covered	Not covered	Replacement with deductible fee and shipping costs	Check supplier's warranty terms
Loan during repairs	Not covered	Not covered	Subject to stock availability	Check supplier's warranty terms
Preventive Maintenance	Can be purchased at an additional cost	Can be purchased at an additional cost	Can be purchased at an additional cost	Check supplier's warranty terms
Support channel	Customer Care Team at Tobii	Customer Care Team at Tobii	Customer Care Team at Tobii	Supplier support



Summary

Contents

- Introduction
- Tobii Limited Warranty
 - Warranty period
 - Coverage
 - Limitation of coverage
 - Limitation of liability
- Tobii Care
 - Coverage
 - Theft coverage
 - Exemptions
 - Purchase
 - Other terms
- Preventive maintenance
- How do I get my product from Tobii repaired?

Introduction

This document describes the terms and conditions of the Tobii Limited Warranty and Tobii Care, as well as their coverage, validity, and limitations.

Tobii Limited Warranty

Warranty period

- Hardware products or accessories from Tobii come with an initial 24-month warranty period from the date of purchase unless otherwise stated in the product description or signed contract.
- Refurbished hardware products or accessories from Tobii come with an initial 12-month warranty period from the date of purchase unless otherwise stated in the product description or signed contract.
- The Tobii VR Integration comes with a 12-month warranty period from the shipment date unless otherwise stated in the product description or signed contract.



- The Tobii Upgrade Key for the Tobii 4C includes an initial 12-month warranty period from the purchase date of the equipment unless otherwise stated in the product description or contract signed with Tobii.
- For subscriptions and rentals from Tobii, the Tobii Care warranty applies until the end of the subscription or rental contract.
- For any non-Tobii or third-party equipment, please refer to the third-party's warranty terms.
- Repaired hardware products from Tobii come with a 3-month warranty period from the date of repair (for the exact same fault the hardware was repaired).

An additional 12-month extension of the warranty may be purchased for hardware from Tobii until the product is marked as "End of Sales" by Tobii, indicating the hardware is being discontinued. Multiple years may be purchased at once.

Coverage

- During the warranty period, Tobii warrants that the hardware product or accessory from Tobii will be free from defects in material if used under normal use conditions in accordance with the user manual and/or product description packaged with the item or posted online. With these conditions met, Tobii will repair and ship back the device free of charge to the original purchaser under contract with Tobii.
- The Tobii Limited Warranty may not be sold, assigned, transferred, or given in full or in part to any subsequent purchaser or acquirer of the hardware product or accessory from Tobii.

Limitation of coverage

- The Tobii Limited Warranty only applies to the product or accessory from Tobii. It does not apply to any non-Tobii equipment, such as computers, tablets, etc., even if the item is intended or labelled for use with the product from Tobii. Third-party manufacturers, suppliers, or publishers may provide warranties for their own products and can be contacted directly for service.
- Outside of the European Union, the repaired equipment can only be picked-up and shipped back to the country where it was originally purchased and delivered (customs documents must be provided to Tobii when sending the unit in for repairs).
- Even with respect to the purchased hardware product from Tobii, the Tobii Limited Warranty shall not apply:



- if the product or accessory from Tobii is not shipped in the transportation case or box provided by Tobii when repairs are needed. In this case, there will be a charge for the cost of an additional case or box to ship it back to the original purchaser.
 - to any deterioration of the cosmetic appearance of the product or accessory from Tobii due to normal wear and tear.
 - to malfunctions caused by the battery if it was improperly installed by the user, if the seals of the battery enclosure or the cells are broken or show evidence of tampering, or if the purchaser is using batteries not supplied by Tobii.
 - to malfunctions caused by electrical surges or other electrical current problems that are not the fault of the product or accessory from Tobii.
 - to use not in accordance with the user manual or not under normal use conditions.
 - to rough handling, corrosion, oxidation, or exposure to liquids, dampness, or extreme thermal or environmental conditions (or a rapid change in such conditions).
 - to unauthorized modifications, connections, or opening, repair by use of unauthorized spare parts, or repair by an unauthorized person or location.
 - to accidents, forces of nature, or other actions beyond the reasonable control of Tobii (including, but not limited to, deficiencies in consumable parts), unless the defect was caused directly by a malfunction.
 - to physical damage to the surface of the product or accessory from Tobii (including, but not limited to, cracks or scratches on the surfaces of the item), including the screen or lens.
 - to any computer or other device to which the product may connect. Tobii does not warrant that the operation of the product or accessory from Tobii will be uninterrupted or error-free.
 - where the software loaded on the product (including, but not limited to, the drivers and/or firmware) needs to be upgraded, if such updates can be loaded by the purchaser or user.
 - to any product from Tobii in which the operating system and/or firmware has been modified, including any failed attempts to alter the operating system.
 - to malfunctions caused by unplugging any cable from the product from Tobii, powering off the product, or powering off your computer during a firmware update.
 - to malfunctions caused by the use of the product or accessory from Tobii with (or connection of the items to) an accessory not approved or provided by Tobii. This applies to use in any way other than the intended use of the product or accessory from Tobii and where such a defect is not the fault of the product itself. Use of non-Tobii software or accessories may void the Limited Warranty.
- For the Tobii VR Integration, Tobii provides a one-year warranty on the retrofitted components (i.e., the HMD only) of the development kit from the date of shipment. In the case of a warranty claim, Tobii will, at its discretion, either (1) repair or replace the HMD, or (2) offer a refund. Components not affected by the retrofit process (i.e., all HTC components except for the HMD) shall be handled under the standard warranty from HTC.
 - The Tobii Limited Warranty does not cover any replacement or loaner equipment during the repair period.



Disclaimer of warranty

EXCEPT AS SPECIFIED IN THIS LIMITED WARRANTY, ALL EXPRESS OR IMPLIED CONDITIONS, REPRESENTATIONS, AND WARRANTIES INCLUDING, WITHOUT LIMITATION, ANY IMPLIED WARRANTY OR CONDITION OF MERCHANTABILITY, FITNESS FOR A PARTICULAR PURPOSE, NON-INFRINGEMENT, SATISFACTORY QUALITY, NON-INTERFERENCE, ACCURACY OF INFORMATIONAL CONTENT, OR ARISING FROM A COURSE OF DEALING, LAW, USAGE, OR TRADE PRACTICE, ARE HEREBY EXCLUDED TO THE EXTENT ALLOWED BY APPLICABLE LAW AND ARE EXPRESSLY DISCLAIMED BY TOBII, ITS SUPPLIERS AND LICENSORS. TO THE EXTENT AN IMPLIED WARRANTY CANNOT BE EXCLUDED, SUCH WARRANTY IS LIMITED IN DURATION TO THE EXPRESS WARRANTY PERIOD. BECAUSE SOME JURISDICTIONS DO NOT ALLOW LIMITATIONS ON HOW LONG AN IMPLIED WARRANTY LASTS, THE ABOVE LIMITATION MAY NOT APPLY. THESE WARRANTIES GIVE THE PURCHASER SPECIFIC LEGAL RIGHTS, AND THE PURCHASER MAY ALSO HAVE OTHER RIGHTS WHICH VARY FROM JURISDICTION TO JURISDICTION. This disclaimer and exclusion shall apply even if the express warranty set forth above fails of its essential purpose.

Limitation and Exclusions of Liability

In no event will Tobii or its licensors be liable for the following, regardless of the theory of liability or whether arising out of the use or inability to use the Tobii product or accessory or otherwise, even if a party been advised of the possibility of such damages: (a) indirect, incidental, exemplary, special or consequential damages; (b) loss or corruption of data or interrupted or loss of business; or (c) loss of revenue, profits, goodwill or anticipated sales or savings. All liability of Tobii, its affiliates, officers, directors, employees, agents, suppliers and licensors collectively, to the purchaser, whether based in warranty, contract, tort (including negligence), or otherwise, shall not exceed the license fees paid by the purchaser for the Tobii product or accessory that gave rise to the claim. This limitation of liability for the Tobii product or accessory is cumulative and not per incident. Nothing in this limited warranty limits or excludes any liability that cannot be limited or excluded under applicable law.

Tobii Care

Tobii Care is an additional purchase to the Tobii Limited Warranty or any extensions of warranty. Tobii Care can only be sold together with a valid Tobii Limited Warranty for Tobii eye trackers.

Tobii Care covers any accidental damages or theft of an eye tracker purchased from Tobii not covered by the Tobii Limited Warranty.

Coverage



- Tobii Care covers eye trackers from Tobii until they are marked as “End of Sales” by Tobii, indicating the hardware is being discontinued. Tobii will honor Tobii Limited Warranty and Tobii Care ongoing contracts purchased before the “End of Sales” date until expiration.
- Tobii Care covers accidental damage, such as liquid spills on (or in) the product, electrical surges, a damaged or broken screen (from a drop or fall), as well as drops, falls, and other collisions.
- Tobii Care does not cover damage due to fire, normal wear and tear, cosmetic damages, intentional damage caused by modifications, or using the eye tracker from Tobii in any way which is inconsistent with its intended purpose.
- If the same root cause, as determined by the Customer Care Team at Tobii, of accidental damage occurs more than twice a year, Tobii is entitled to void and/or terminate the Tobii Care contract.
- Depending on the availability of stock, a loaner product may be arranged if a unit is needed during the repair time. Shipping and handling fees will be charged in this case.

Theft coverage

- Replacing a product under Tobii Care due to theft requires a formal and signed police report. When the signed police report has been received and accepted by Tobii, along with the deductible fee, a replacement product will be sent to the purchaser. Shipping costs are not covered by Tobii.
- The deductible fee of 2,500 EUR or 3,000 USD must be paid to Tobii before the affected unit can be replaced.

Exemptions

- Damage of any products that are typically covered by the purchaser’s private, building, or employer insurance, including fire and flood, are classified as exemptions and, therefore, not immediately covered under the Tobii Care policy. The purchaser must provide evidence that they were unable to recover compensation through any of the suggested insurances. Once all other insurance policies have been exhausted, the purchaser may be eligible to pay the deductible amount mentioned above in order to have the unit replaced. An account manager from Tobii will have additional information about any exemptions and conditions applied to Tobii Care.
- Loss of the hardware product or accessory from Tobii is not covered by Tobii Care.



Purchase

Contracts for Tobii Care shall be signed on an account basis, and the price of Tobii Care is a unit price per hardware product purchased from Tobii.

- **Payment Terms**

- Tobii Care invoices are sent on a monthly or annual basis, depending on the chosen product. Payment terms are net 30 days, unless otherwise specified in the purchase agreement.

- **Duration and cancellation**

- Tobii Care is valid for one month or one year, depending on the product, from the day the invoice was sent by Tobii. The purchaser must pay the invoice according to the payment terms.
- The purchaser may cancel Tobii Care with one month's notice by email to sales@tobii.com; provided, however, that Tobii will not refund any amounts pre-paid for annual coverage.
- Tobii may terminate Tobii Care with one month's notice by sending a written notice to customer's invoice address, and will refund any amounts pre-paid for annual coverage (prorated for time used).

Other terms

Other terms applicable to the matters addressed in this service description may be included in the purchase or rental/subscription agreement between the purchaser and Tobii. The terms and conditions of this service description are subject to change without prior notice.

Preventive maintenance

Preventive maintenance may be purchased additionally for undamaged devices. This service includes cleaning, updating, performance checking and recalibration, but does not include replacement of products or cover repairs.

How do I get my product from Tobii repaired?

- The repair process is initiated by the Customer Care Team at Tobii after first attempting to troubleshoot the product issues with the purchaser.
- The assigned Tobii Customer Care Team member is responsible for issuing the Return Material Authorization (RMA) and communicating the damaged device return instructions to the purchaser.
- The purchaser is responsible for the cost of shipping the damaged unit to Tobii unless otherwise specifically agreed. Tobii will pay any shipping costs when returning the unit.



- Repairs are carried out within 15 days of receiving the damaged device at the support office, unless a part is not available, or Tobii informs the purchaser otherwise.
- Replacements and loan devices are not included in the Limited Warranty. While the unit is being repaired, a device may be rented from a Tobii account manager (subject to stock availability).